

University of New Mexico

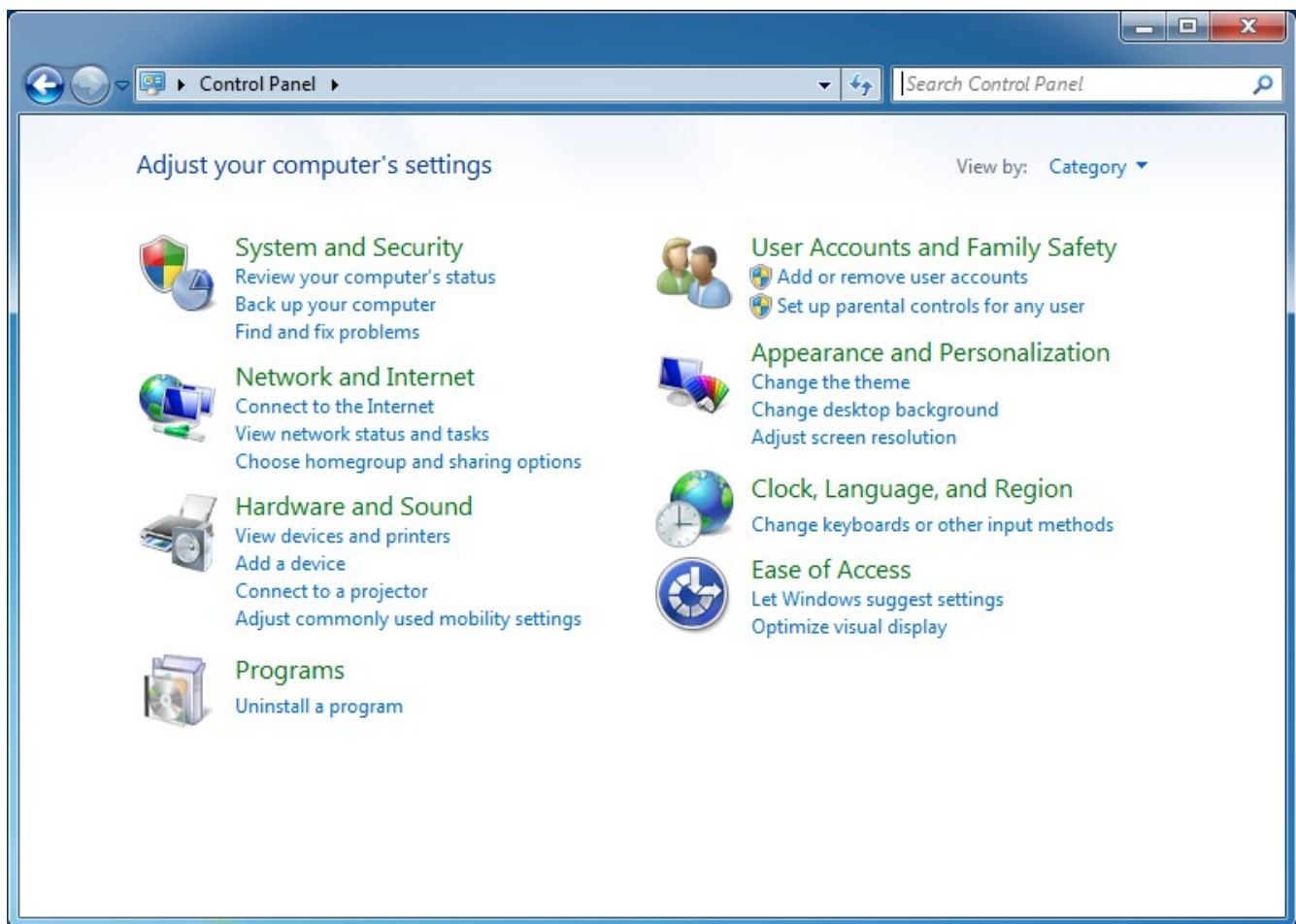
Electrical and Computer Engineering Department

Computer Support Group Documentation

Configuring Windows 7 to connect to eceRADIUS

If for any reason you are unable to successfully connect to eceRADIUS, please contact [ece-support@ece.unm.edu](mailto:ece-support@ece.unm.edu) or call 505-277-3934.

Begin by opening the Control Panel.  
Start->Control Panel



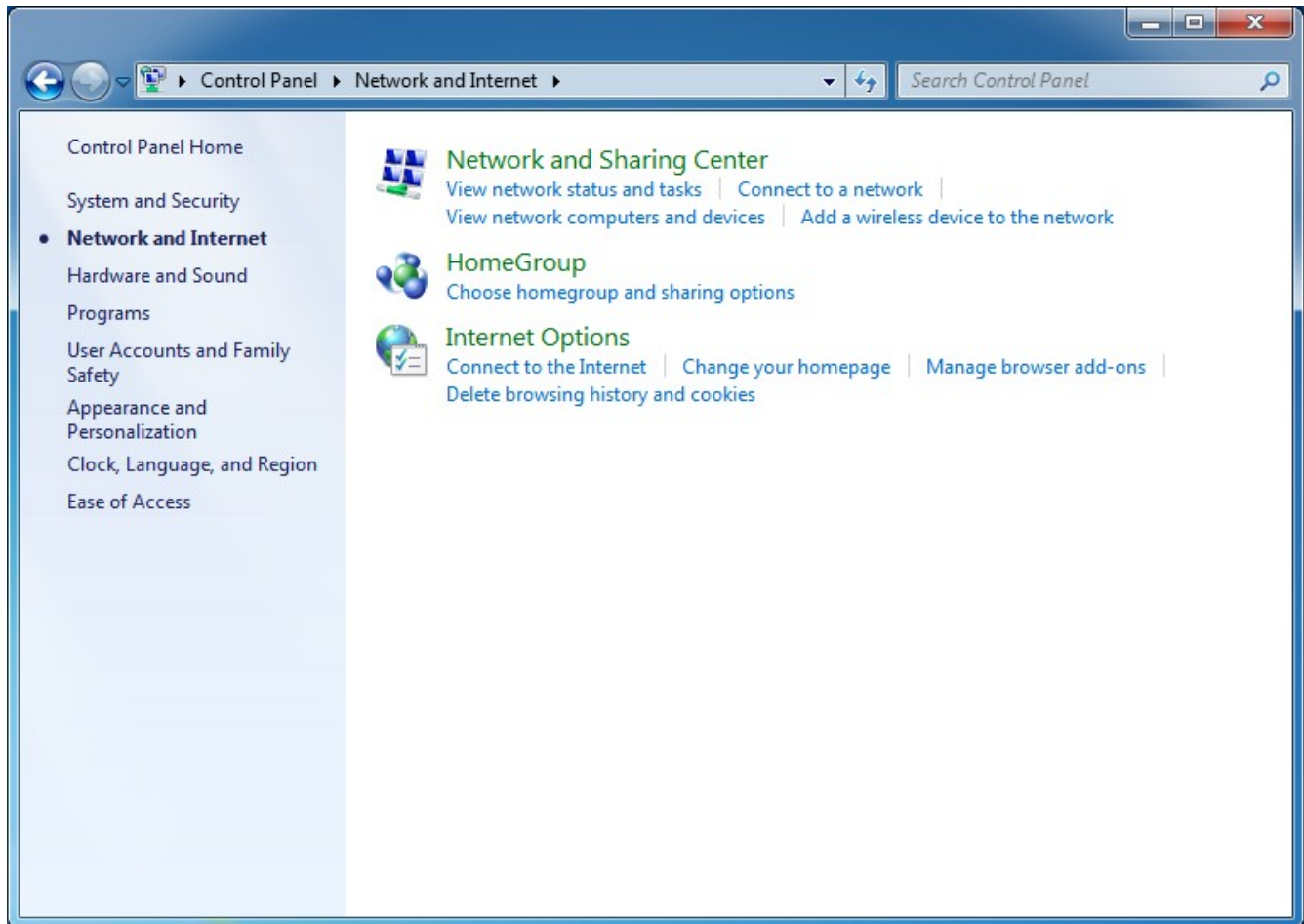
University of New Mexico

Electrical and Computer Engineering Department

Computer Support Group Documentation

Configuring Windows 7 to connect to eceRADIUS

Click "Network and Internet"  
Click "Network and Sharing Center"



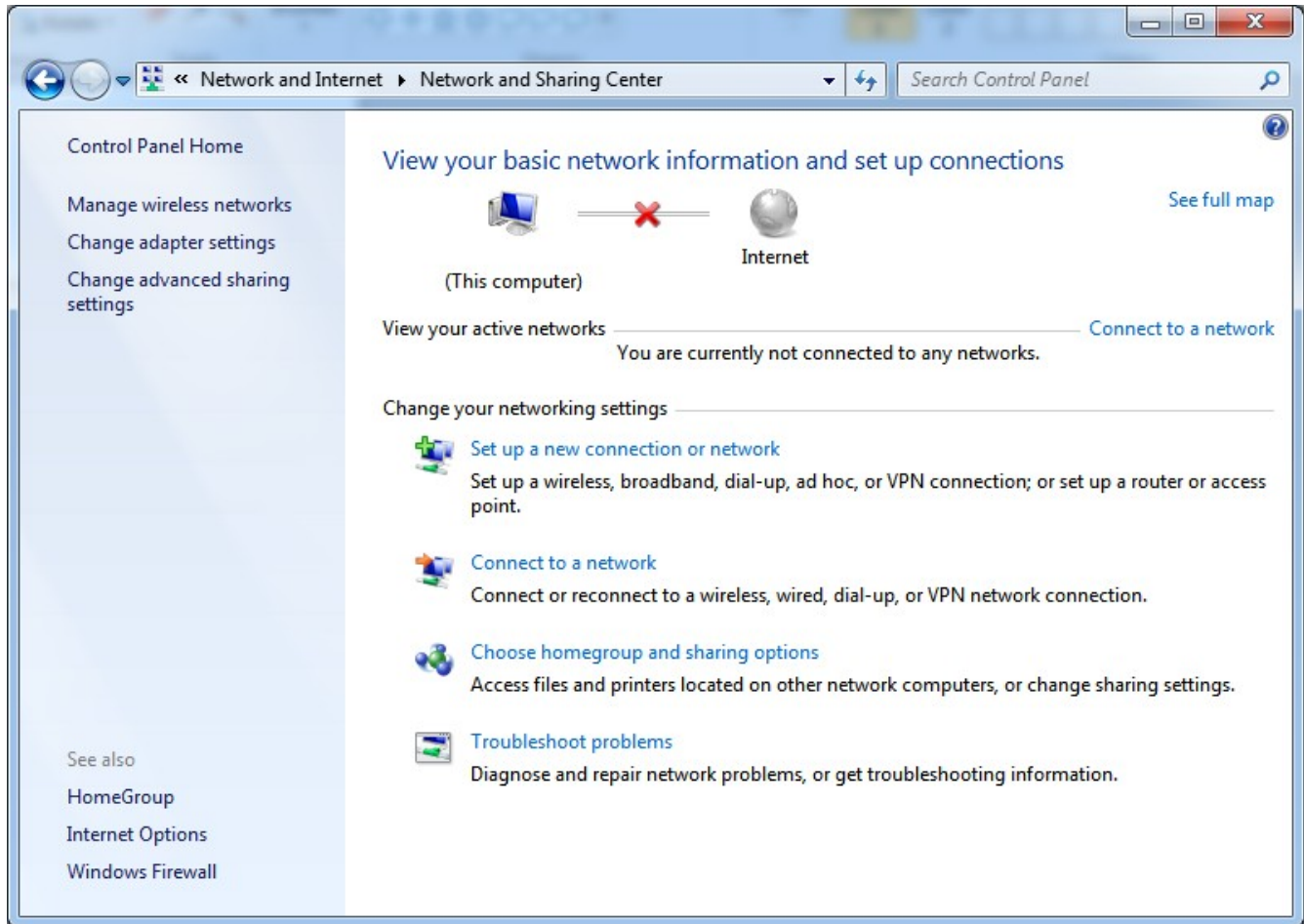
University of New Mexico

Electrical and Computer Engineering Department

Computer Support Group Documentation

Configuring Windows 7 to connect to eceRADIUS

On the left pane, Click "Manage wireless networks"



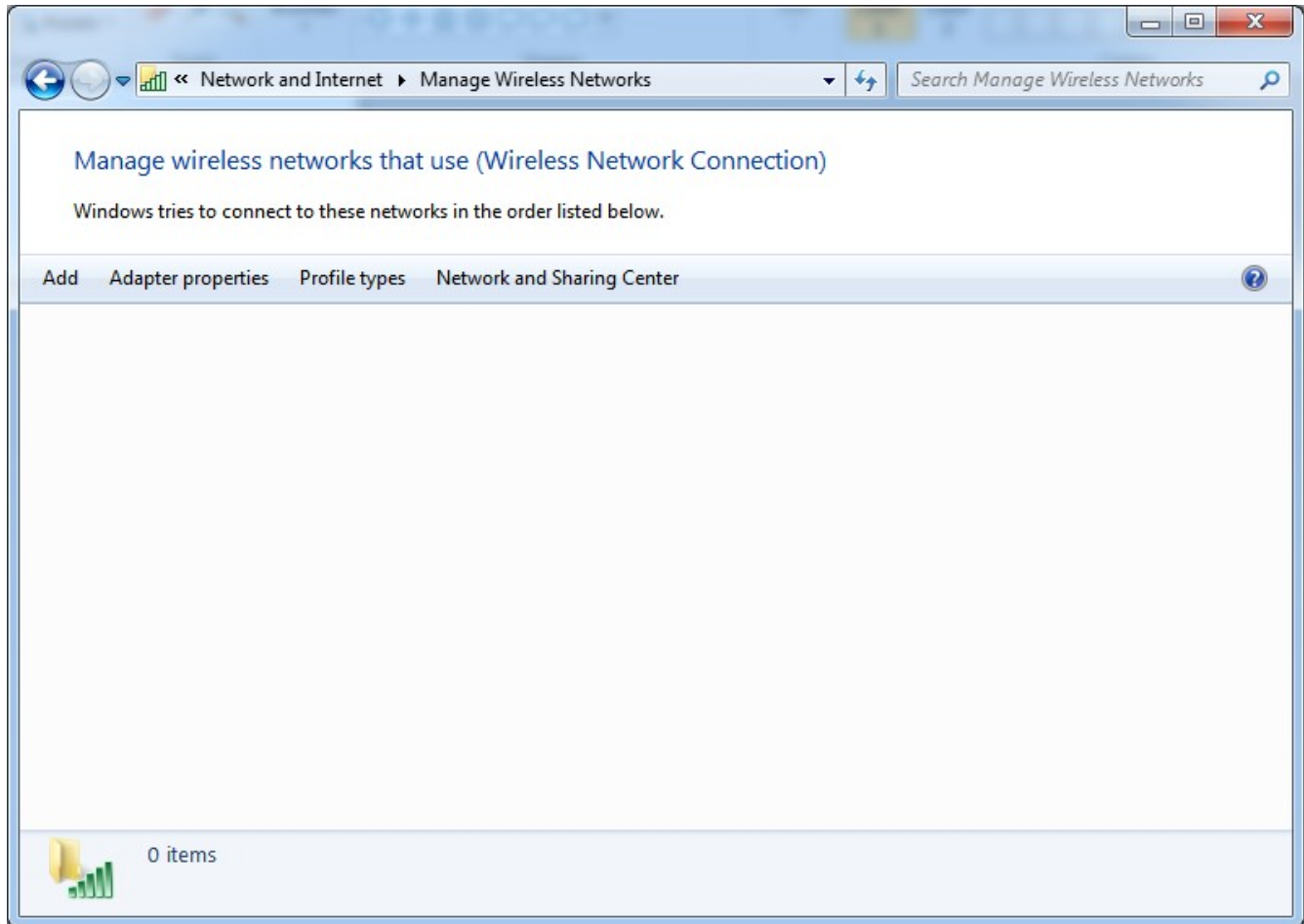
University of New Mexico

Electrical and Computer Engineering Department

Computer Support Group Documentation

Configuring Windows 7 to connect to eceRADIUS

Click "Add"



University of New Mexico

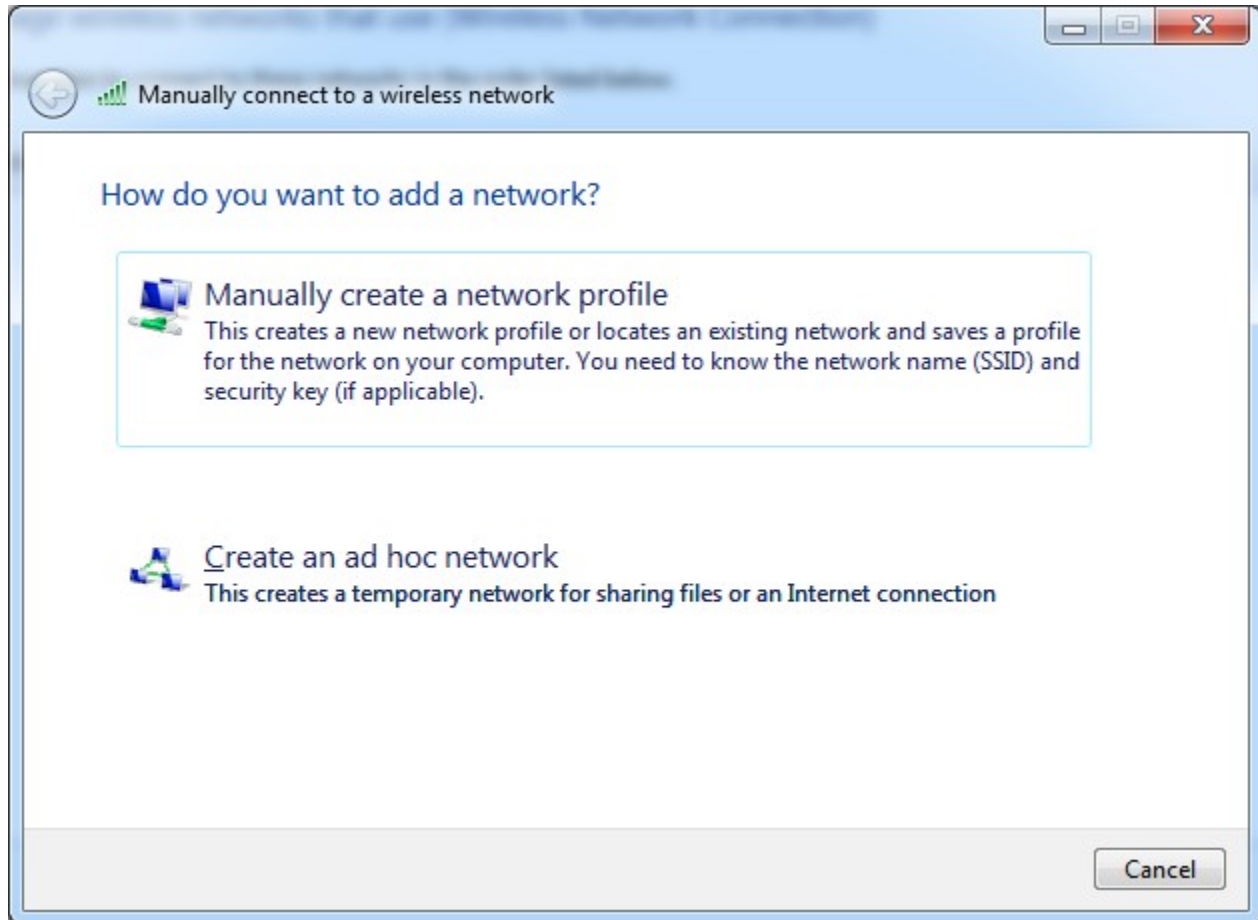
Electrical and Computer Engineering Department

Computer Support Group Documentation

Configuring Windows 7 to connect to eceRADIUS

---

Click "Manually create a network profile"



University of New Mexico

Electrical and Computer Engineering Department

Computer Support Group Documentation

Configuring Windows 7 to connect to eceRADIUS

---

Type "eceRADIUS" in the "Network name:" field (capitalization does matter)

Change "Security type:" to "WPA-Enterprise"

Change "Encryption type:" to "TKIP"

Check the box next to "Connect even if the network is not broadcasting"

Click "Next"

Manually connect to a wireless network

Enter information for the wireless network you want to add

Network name: eceRADIUS

Security type: WPA-Enterprise

Encryption type: TKIP

Security Key:   Hide characters

Start this connection automatically

Connect even if the network is not broadcasting

Warning: If you select this option, your computer's privacy might be at risk.

Next Cancel

University of New Mexico

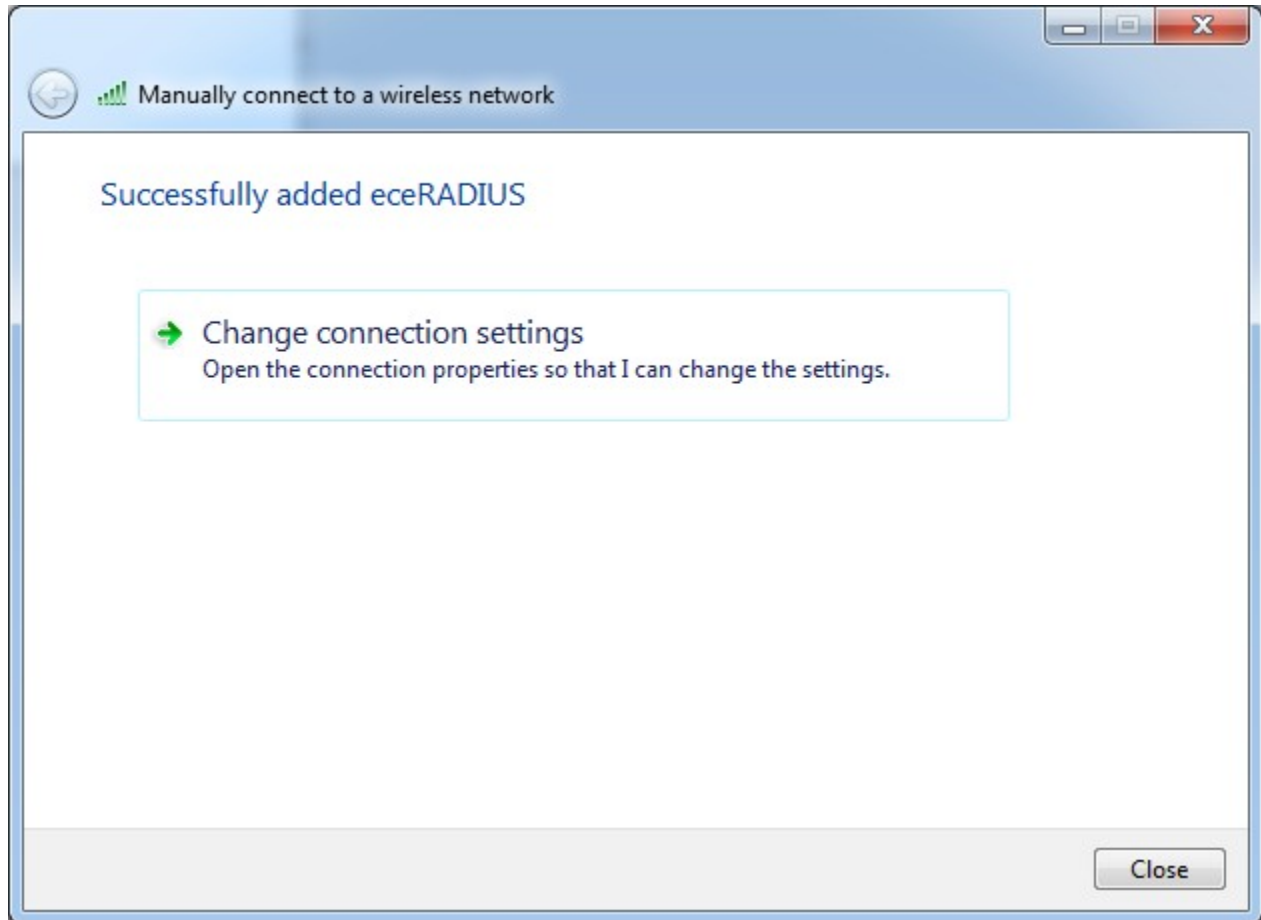
Electrical and Computer Engineering Department

Computer Support Group Documentation

Configuring Windows 7 to connect to eceRADIUS

---

Click "Change connection settings"



University of New Mexico

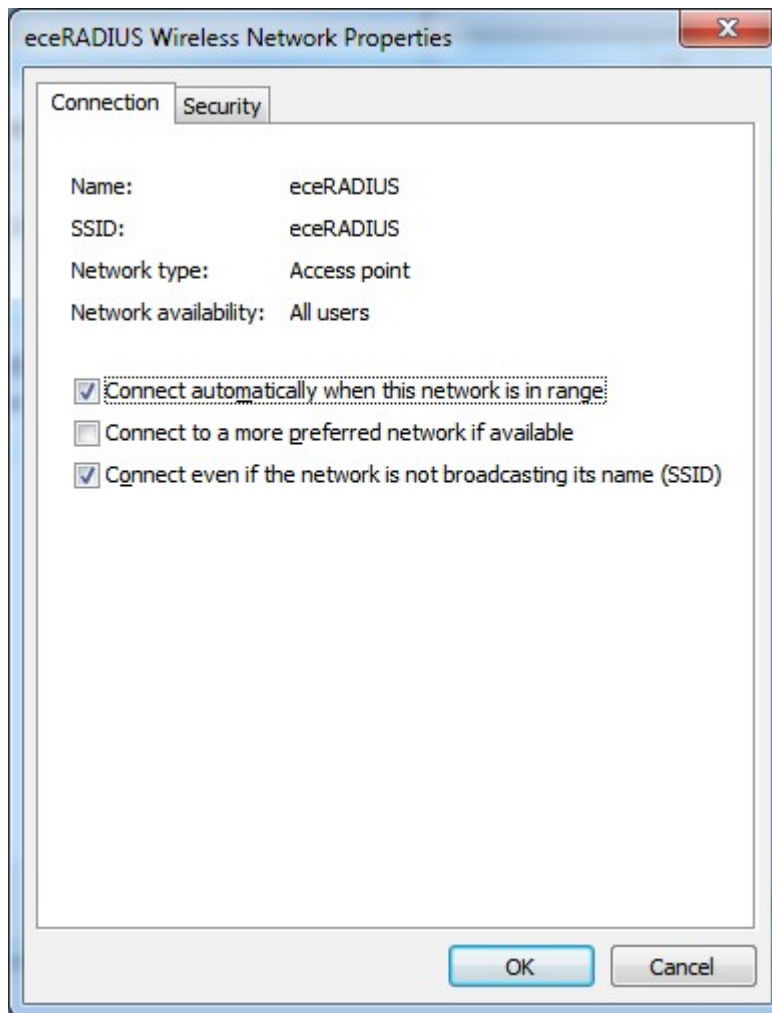
Electrical and Computer Engineering Department

Computer Support Group Documentation

Configuring Windows 7 to connect to eceRADIUS

---

Uncheck the box next to "Connect to a more preferred network if available"  
Click the "Security" tab



University of New Mexico

Electrical and Computer Engineering Department

Computer Support Group Documentation

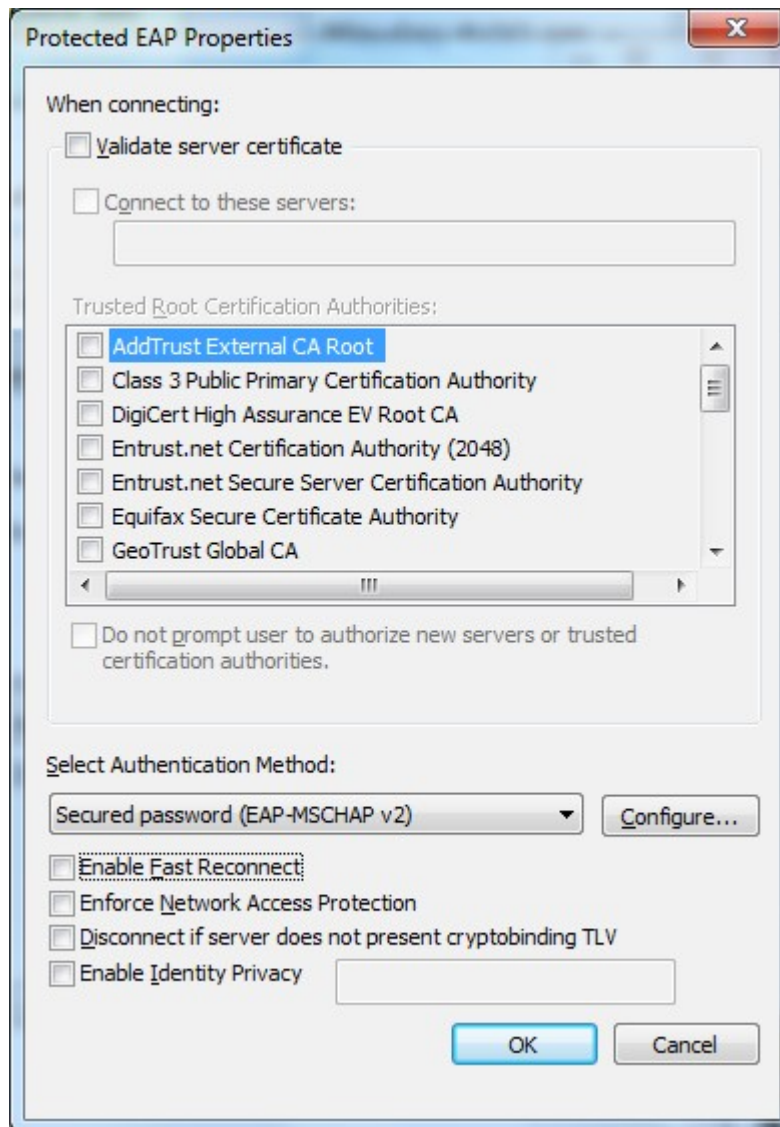
Configuring Windows 7 to connect to eceRADIUS

---

Uncheck the box next to "Validate server certificate"

Uncheck the box next to "Enable Fast Reconnect"

Click "Configure..."



University of New Mexico

Electrical and Computer Engineering Department

Computer Support Group Documentation

Configuring Windows 7 to connect to eceRADIUS

---

Uncheck the box next to "Automatically use my Windows logon name and password"  
Click "OK"



University of New Mexico

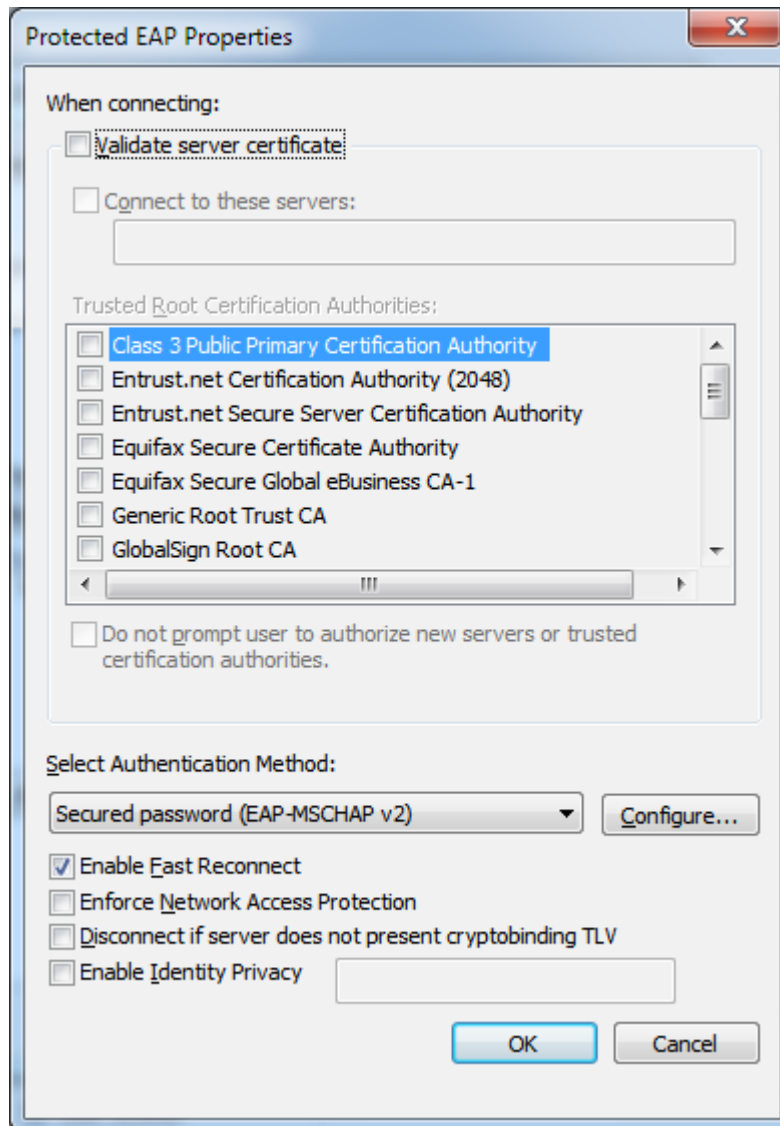
Electrical and Computer Engineering Department

Computer Support Group Documentation

Configuring Windows 7 to connect to eceRADIUS

---

Click "OK"



University of New Mexico

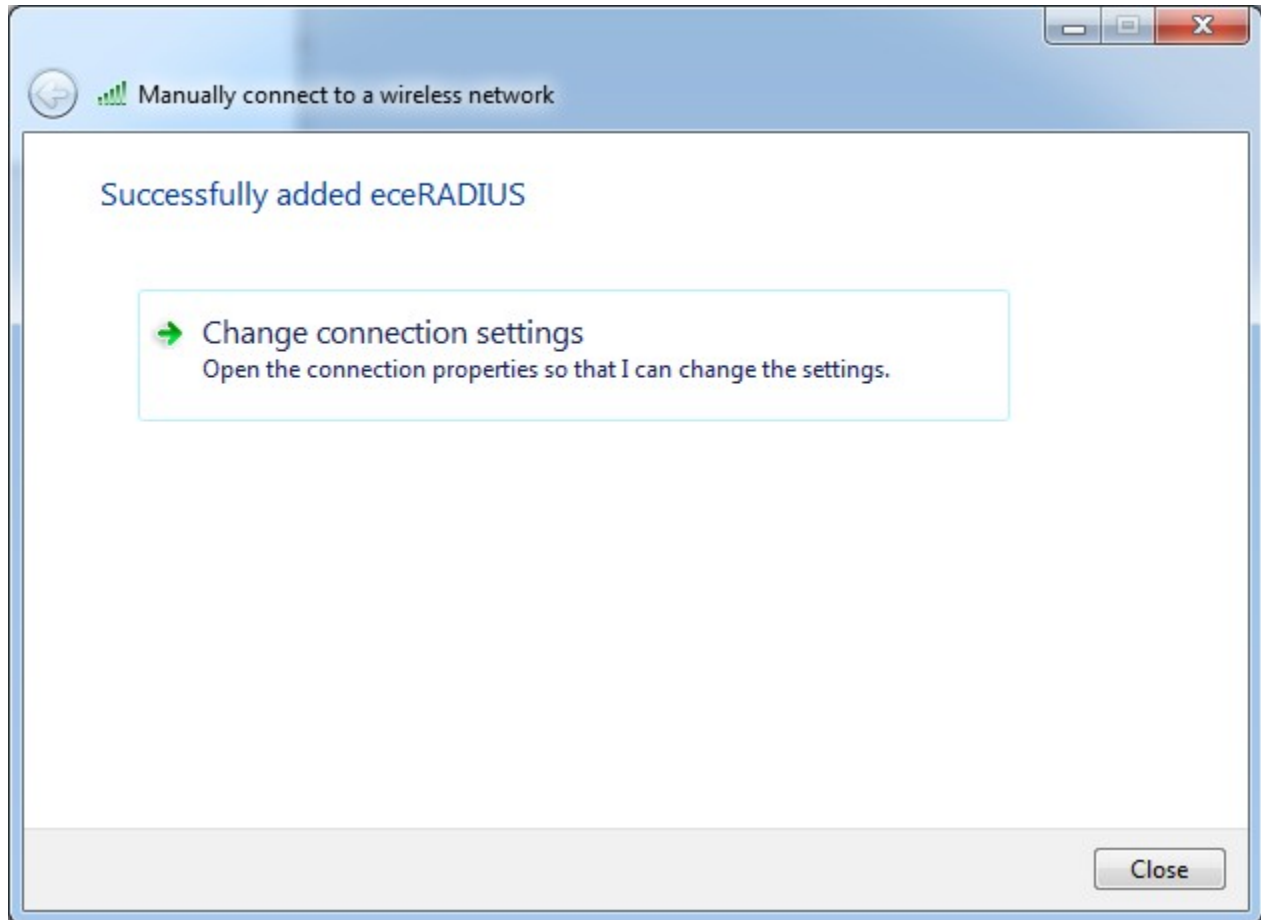
Electrical and Computer Engineering Department

Computer Support Group Documentation

Configuring Windows 7 to connect to eceRADIUS

---

Click "Close"



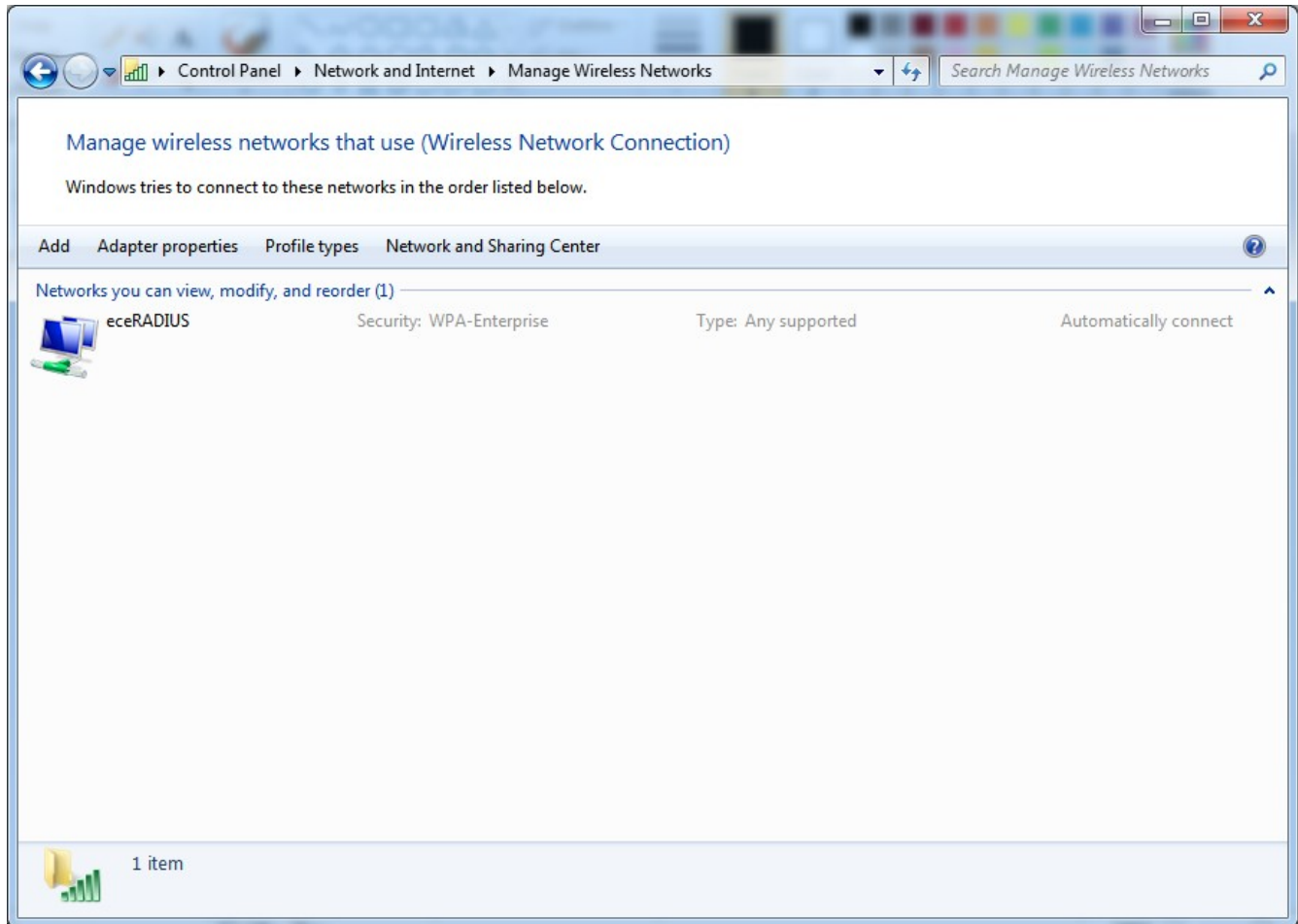
University of New Mexico

Electrical and Computer Engineering Department

Computer Support Group Documentation

Configuring Windows 7 to connect to eceRADIUS

Click the Back Button to take you back to the "Network and Sharing Center"



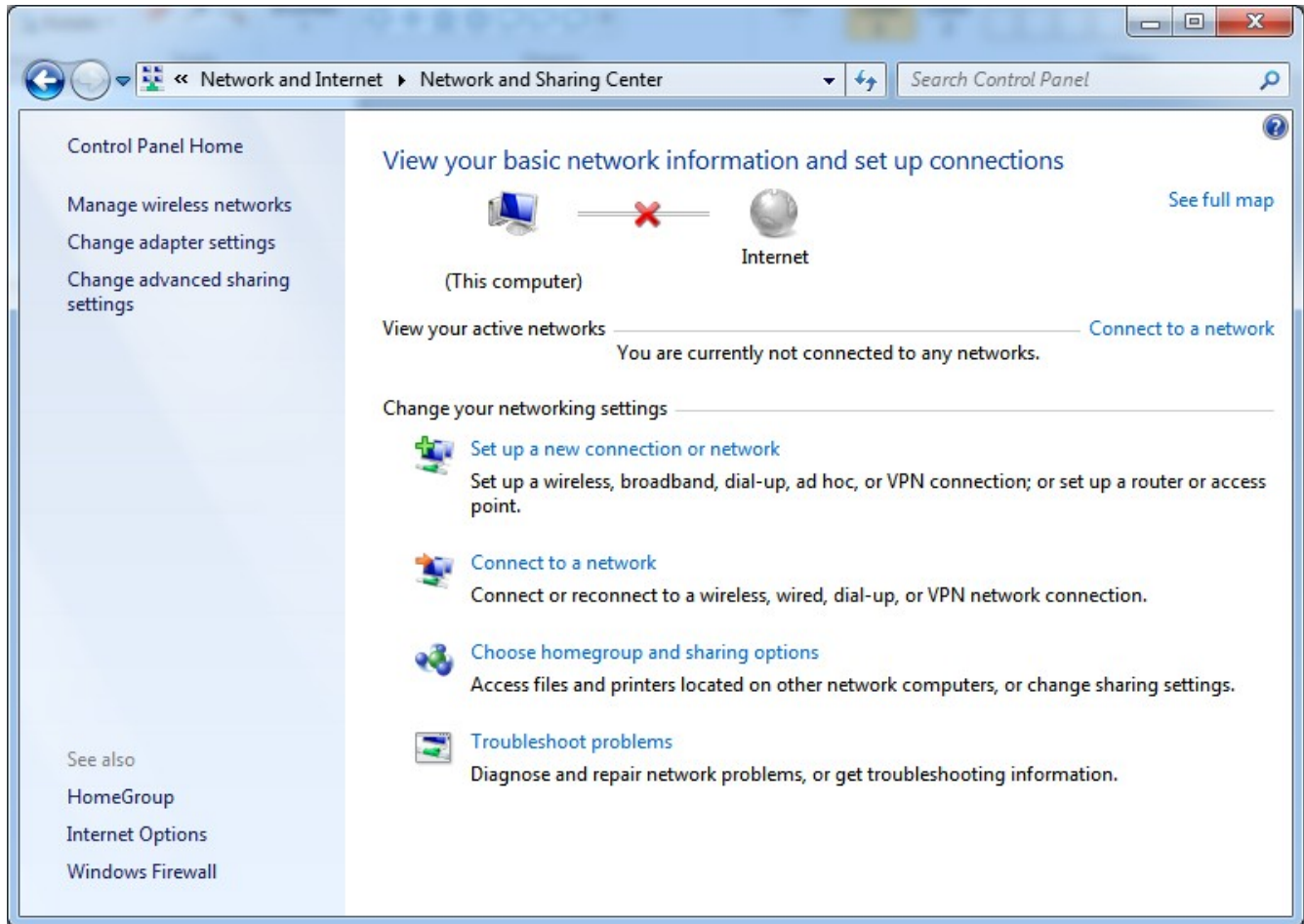
University of New Mexico

Electrical and Computer Engineering Department

Computer Support Group Documentation

Configuring Windows 7 to connect to eceRADIUS

Click "Connect to a network"



University of New Mexico

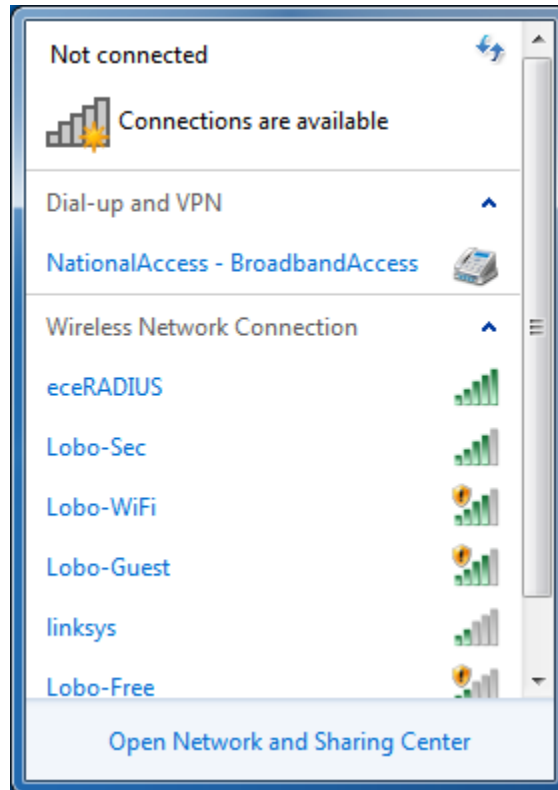
Electrical and Computer Engineering Department

Computer Support Group Documentation

Configuring Windows 7 to connect to eceRADIUS

---

Click "eceRADIUS" then click "Connect"



University of New Mexico

Electrical and Computer Engineering Department

Computer Support Group Documentation

Configuring Windows 7 to connect to eceRADIUS

---

Enter your username

Enter your password

Click "OK"



University of New Mexico

Electrical and Computer Engineering Department

Computer Support Group Documentation

Configuring Windows 7 to connect to eceRADIUS

Once you have successfully connected to eceRADIUS, your "Network and Sharing Center" window should look similar to this:

