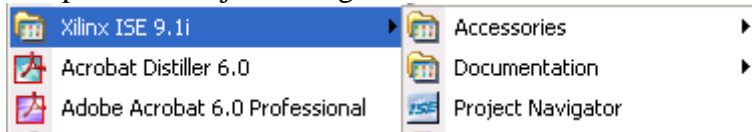


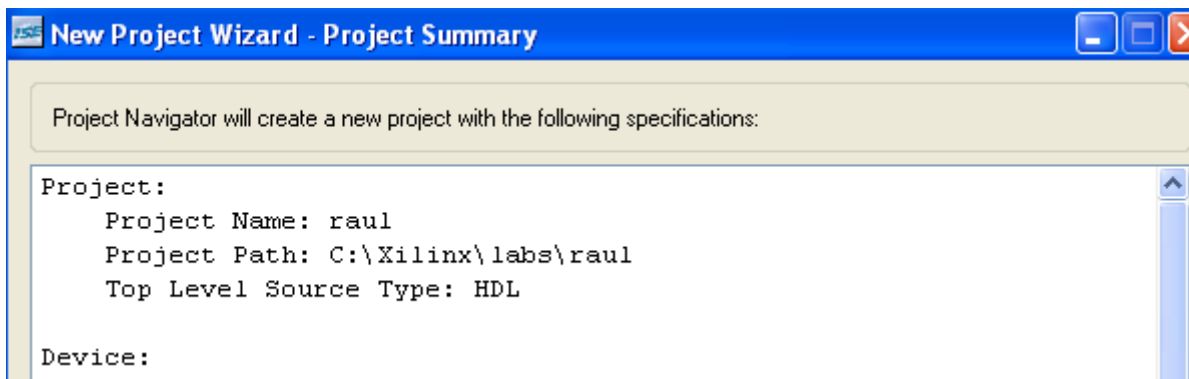
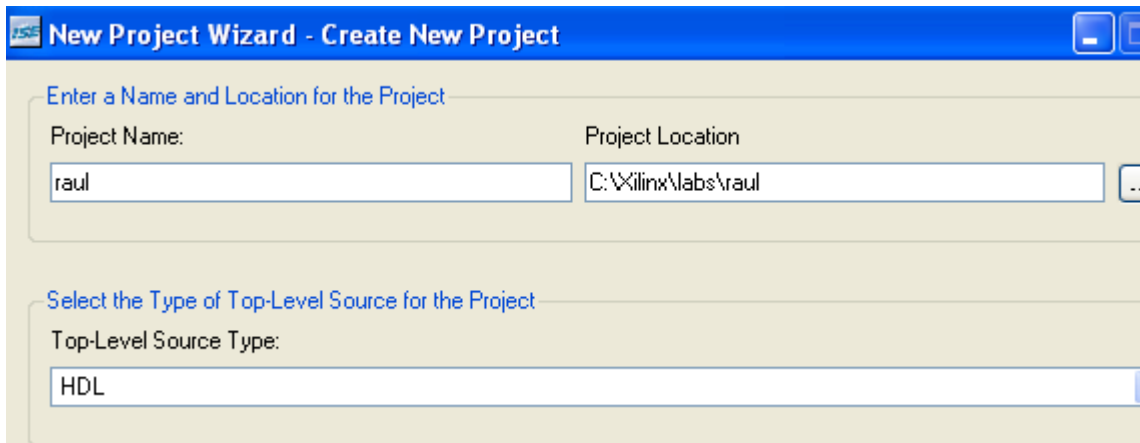
## Example ISE 9.i

Using ISE 9.i is similar to ISE 7.2 (which is installed in Eng building room 216), however there are some differences as shown in the next example.

1. Open the “Project Navigation”

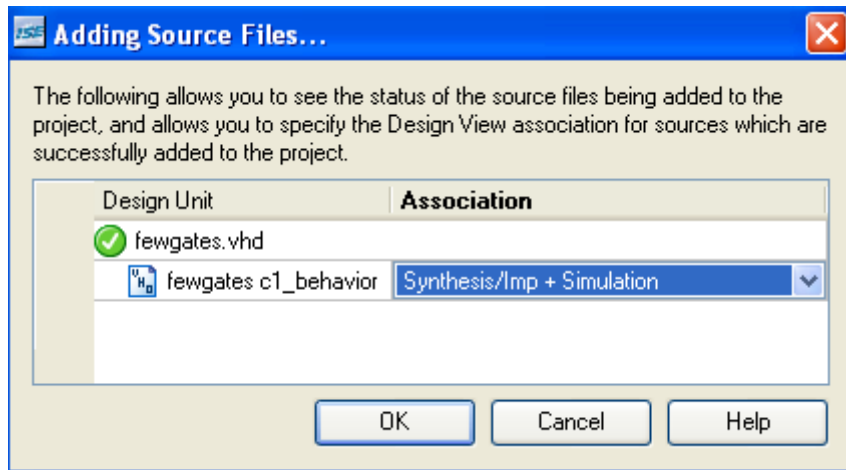


2. Create new project

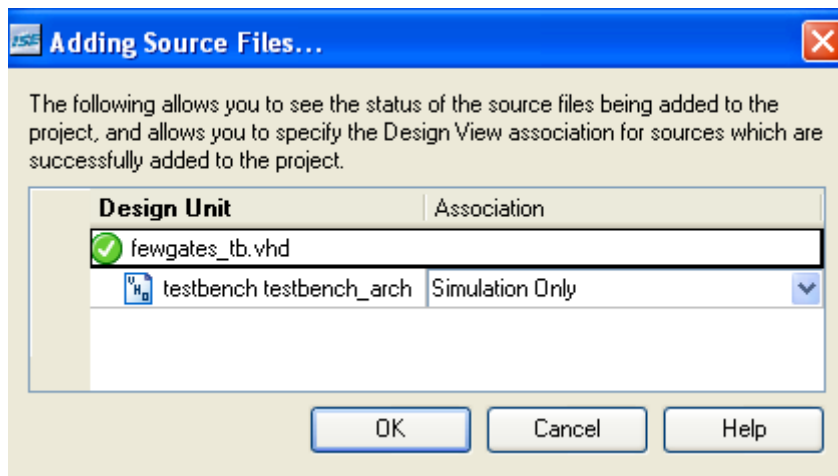


3. From [http://www.ece.unm.edu/vhdl/Labs2007/summer07/summer07\\_labs.htm](http://www.ece.unm.edu/vhdl/Labs2007/summer07/summer07_labs.htm) download files: fewgates.vhd and fewgates\_tb.vhd in the directory of the project.

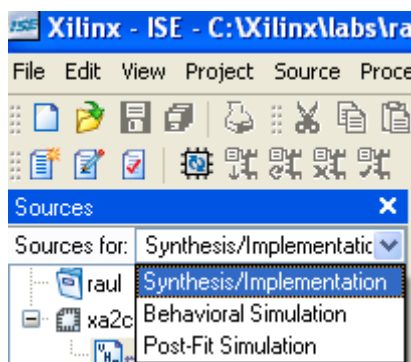
4. Add fewgates.vhd (Project -> Add source) and use the following option:



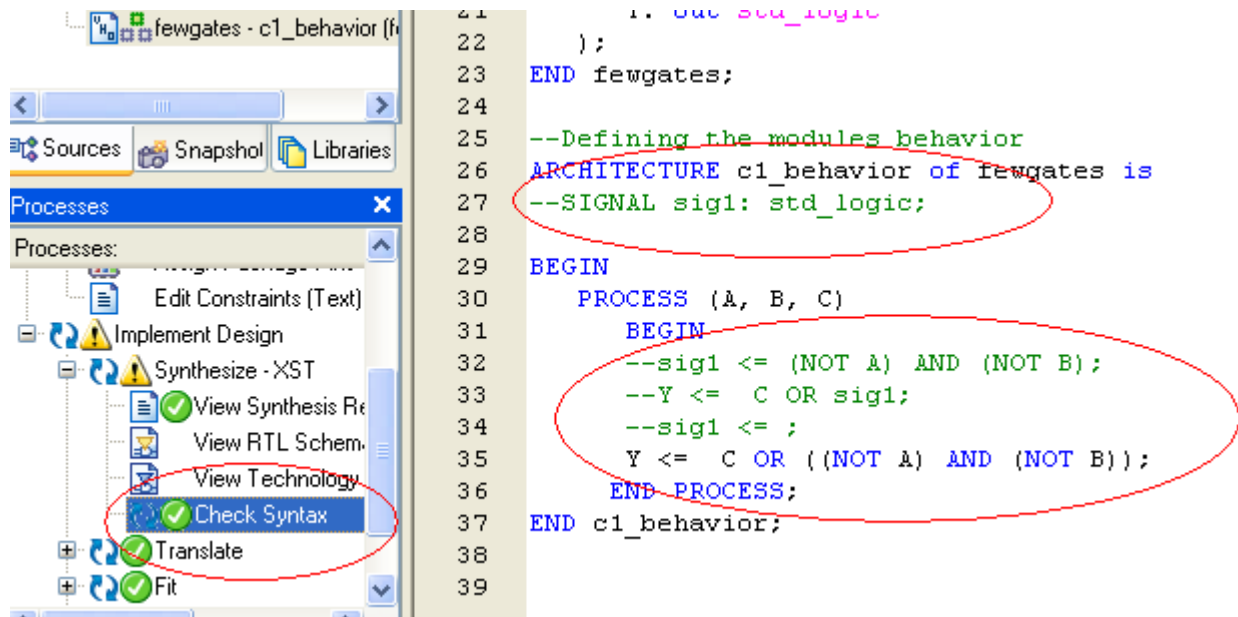
5. Add fewgates\_tb.vhd (Project -> Add source) and use the following option:



6. Open fewgates.vhd. From the project window select “Synthesis/ Implementation” and double click on fewgates.vhd.

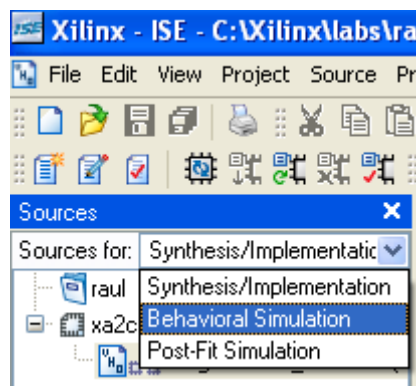


Edit fewgates.vhd as follow:



And check syntax

7. Open the test bench file. Select “Behavioral Simulation” from the project window and double click on fewgates\_tb.vhd.. Finally, run the simulation and check the waveforms.



END