

How to install Xilinx in Windows

Part A: Get a Xilinx account:

1. Go to :

http://www.xilinx.com/xlnx/xil_entry2.jsp?sMode=login&group=mysupport

2. Select "Create an account". Follow the directions. At the end, you will receive an e-mail that confirms you have a Xilinx account (it could take 5 to 10 minutes with UNM e-mail). Follow the instruction in the e-mail to complete the registration process.

Part B: Installation of ISE

1. Go to:

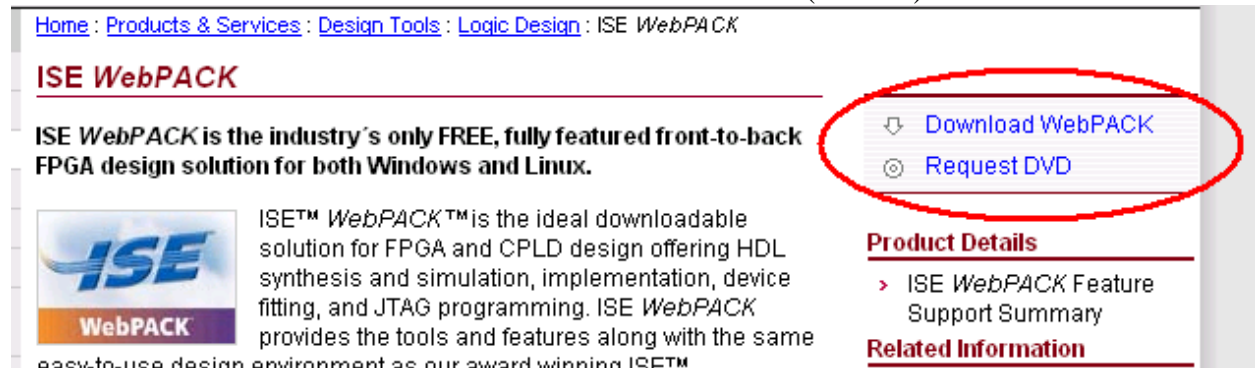
<http://www.xilinx.com/webpack/index.htm>

Use your Xilinx account and password. (from PART A).

2. Download and run

ISE WebPACK – WebInstall

Microsoft Windows XP / 2000 Professional (8.3 MB)



The screenshot shows the Xilinx ISE WebPACK website. At the top, there are navigation links: Home, Products & Services, Design Tools, and Logic Design. The main heading is "ISE WebPACK". Below this, a text block states: "ISE WebPACK is the industry's only FREE, fully featured front-to-back FPGA design solution for both Windows and Linux." To the right of this text, there are two buttons: "Download WebPACK" and "Request DVD", both of which are circled in red. Below the text, there is an ISE WebPACK logo and a description: "ISE™ WebPACK™ is the ideal downloadable solution for FPGA and CPLD design offering HDL synthesis and simulation, implementation, device fitting, and JTAG programming. ISE WebPACK provides the tools and features along with the same design environment as our award winning ISE™". To the right of the logo, there are sections for "Product Details" (with a link to "ISE WebPACK Feature Support Summary") and "Related Information".

Put your personal data in the screens (address, phone, etc). The last screen before download the software is:

Thank You!

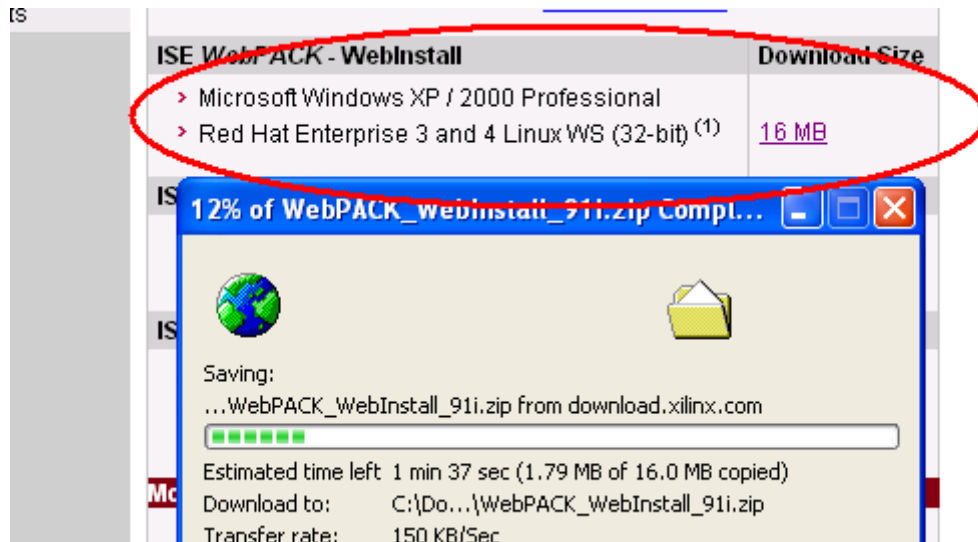
You have completed the software registration process. The Xilinx Development System was registered with the following information:

Name: **Raul Peralta**
Email Address: **rperalta@unm.edu**
Product ID: **OWW123456789**
Registration ID: **N/A**

Your Registration ID, which is used during the software installation process, has been sent via email to **rperalta@unm.edu**.

[Download ISE WebPACK](#)

Notice that the Registration ID will be send to your e-mail.



3. Open/run ISE WebPACK, accept the terms of software license and choose the default values (it will take a while 2710MB!).

Part C: Installation of Model SIM

1. From <http://www.xilinx.com/webpack/index.htm> select the link (use your xilinx account and password if it is necessary):

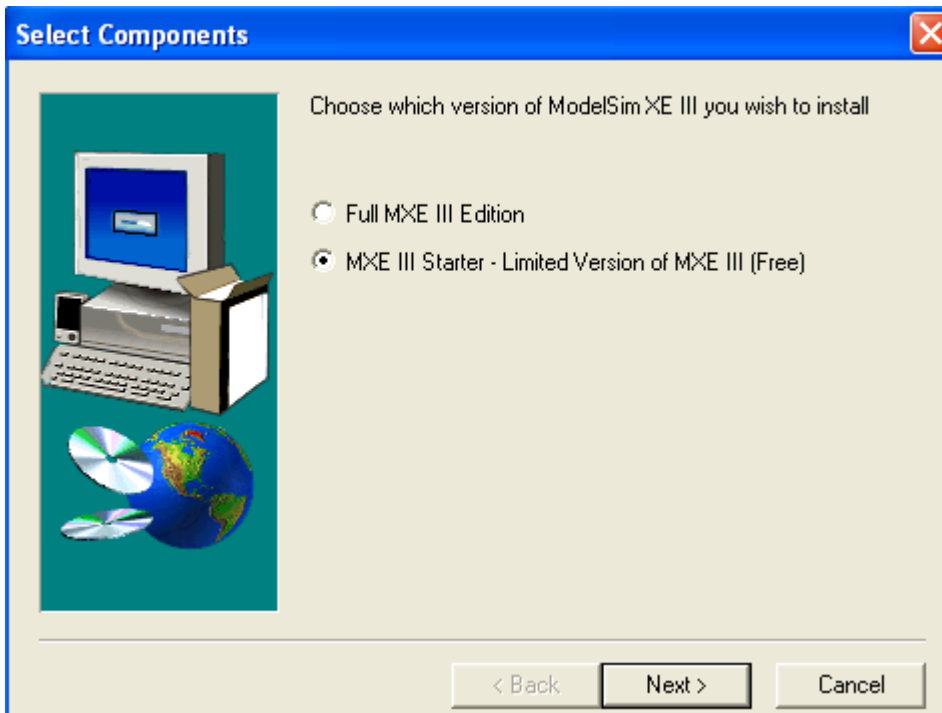
Sim Xilinx Edition-III (MXE-III)

Microsoft Windows XP / 2000 Professional (131 MB)

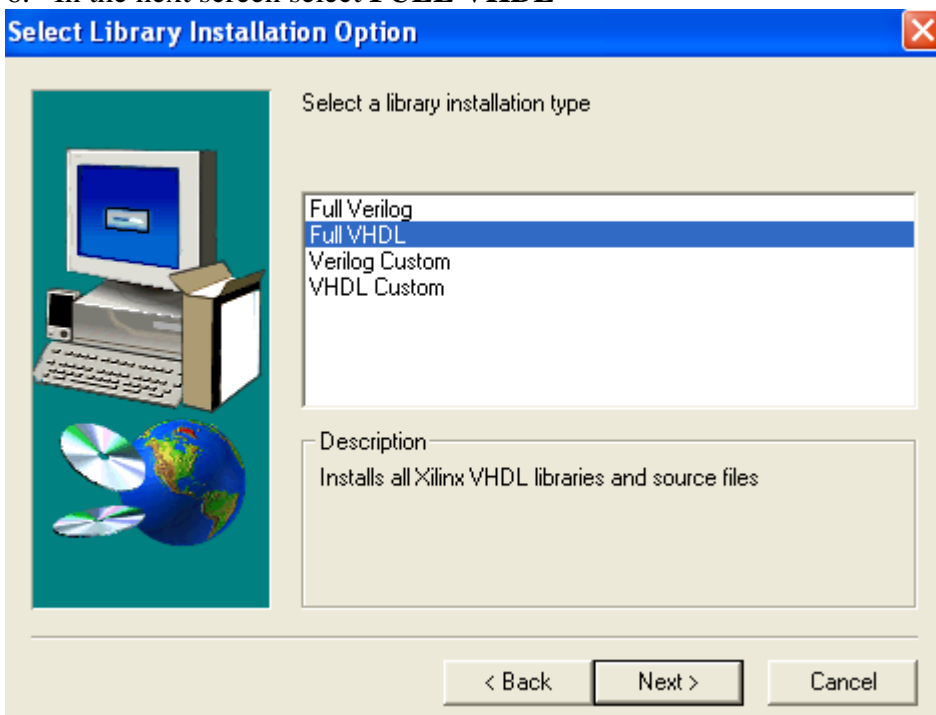


Download Notes

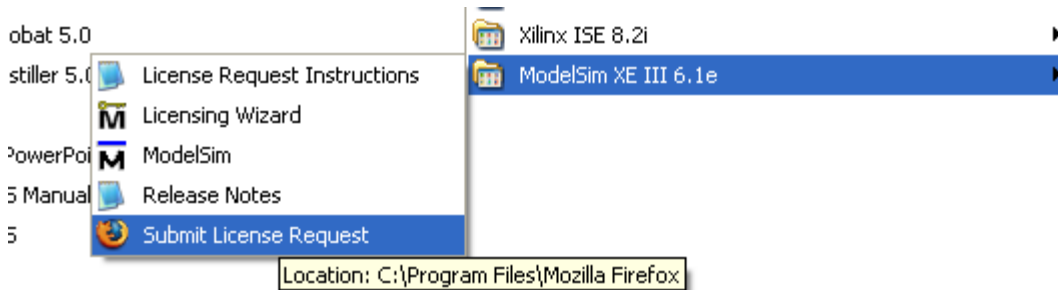
1. You must be logged on as 'root' in order to install cable drivers on
2. Accept the terms of license. From the next screen download mxw_3_6.1e.zip.
3. Unzip mxw_3_6.2c.zip, and run Setup.exe.
4. In the next screen select **MXE III Starter – Limited Version of MXE III (free)**



5. Accept the terms of license and use the default values for the destination directory.
6. In the next screen select **FULL VHDL**



7. Accept the last default values. Installation starts.
8. Before you use the simulator, Modeltech, it is necessary to submit the license. From Windows menus: Start -> All Programs -> ModelSim XE III 6.0. Select Submit License Request.



9. Then, select Continue (because you have the Xilinx account, Part A)

ModelSim Xilinx Edition License Request



ModelSim™ License Requi

To use this page requires that you login at www.xilinx.com.

Continue

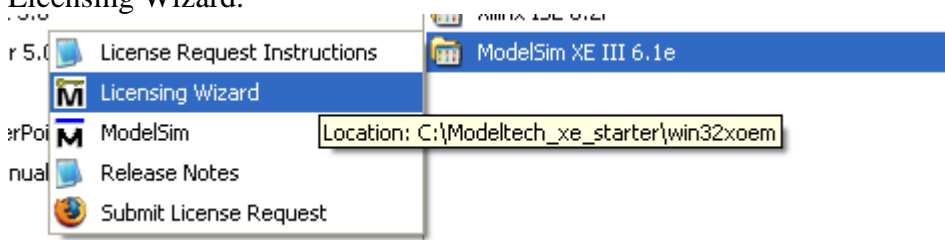
Click '**Continue**' if you've already registered. You will be prompted for your www.xilinx.com username and password.



Register

Click '**Register**' to register now at www.xilinx.com. Once you have registered, use the 'Back' button on your brows page, and then use the 'Continue' button to generate your licer

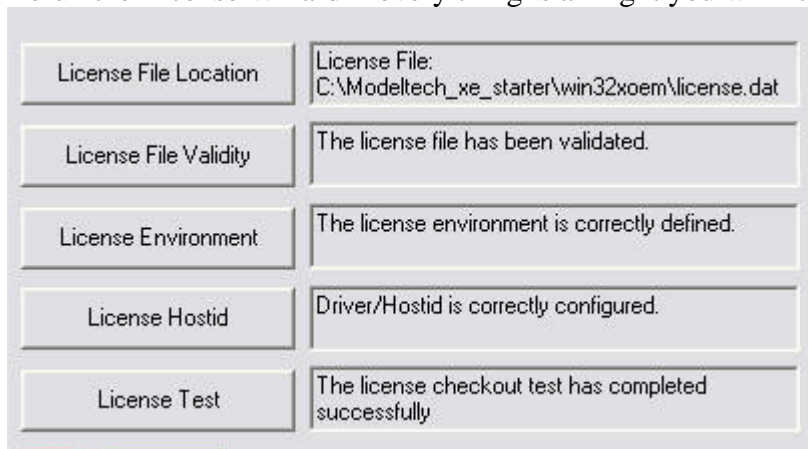
10. Enter your **username and password** (from PART A) if it is necessary and accepts the terms. If every thing is all right you will get a confirmation message in your e-mail.
11. Xilinx will send an e-mail and a file (license.dat). Download the *.dat probably inside modeltech directory (do not delete the license.dat file, otherwise the simulator is not going to work).
12. From Windows menus: Start -> All Programs -> ModelSim XE III 6.0a. Select Licensing Wizard.



13. Enter the location of "license.dat":



14. Rerun the License Wizard if every thing is all right you will have the next screen:



15. END